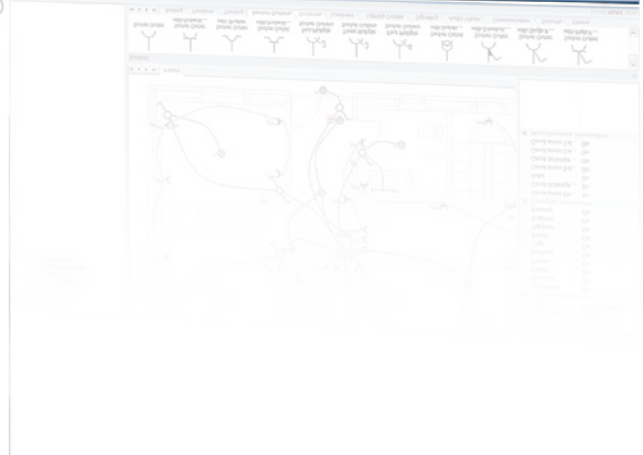
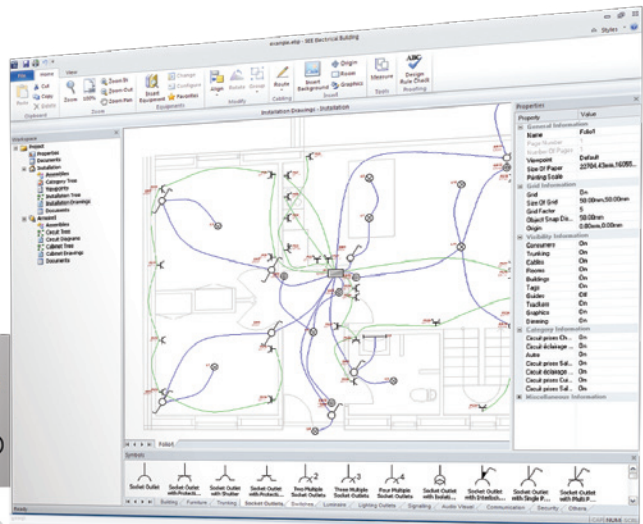




24 years of experience, over 61,000 licences sold, 22 sites in 16 countries, over 340 employees, Listed on Euronext NYSE since 1997

“SEE Electrical Building :

A unique software program to design your diagrams and automatically generate single-line schemes.”



The CAD Specialist dedicated to
Electrical Engineering, Systems and Industrial Fluids



www.ige-xao.co.uk

An easy to use, modular and professional software!

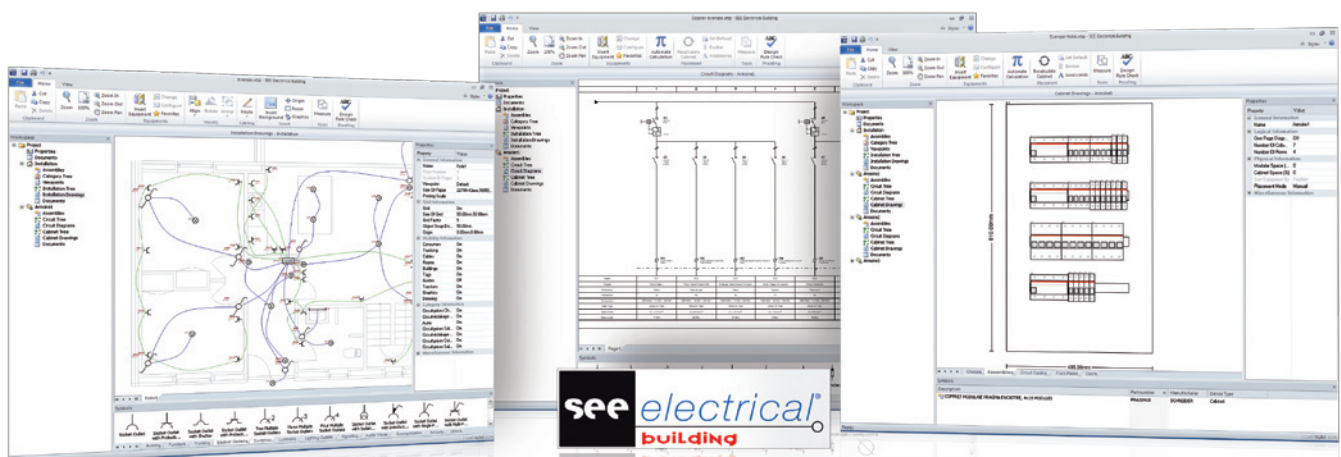
Dedicated to the Construction market, **SEE Electrical Building** is the latest of IGE+XAO's Software.

SEE Electrical Building enables you to design electrical installations for domestic and "small service" markets. This software has been created following the requirements of installers who were looking for a modular and easy to use software program which could deliver reliable and high quality documentation based on the state of the art software technology, **SEE Electrical Building** offers all the advantage of a modern tool:

- Professional software (standardised symbols, database of service market materials,...),
- Intuitive interface,
- Rapid and simple installation and download.

An all-in-one solution !

SEE Electrical Building enables you to create or to import an architects ground-plan, to create the electrical implantation, and then to generate the single-line schemes, the settlement of the layout and the materials list.



A powerful and open database!

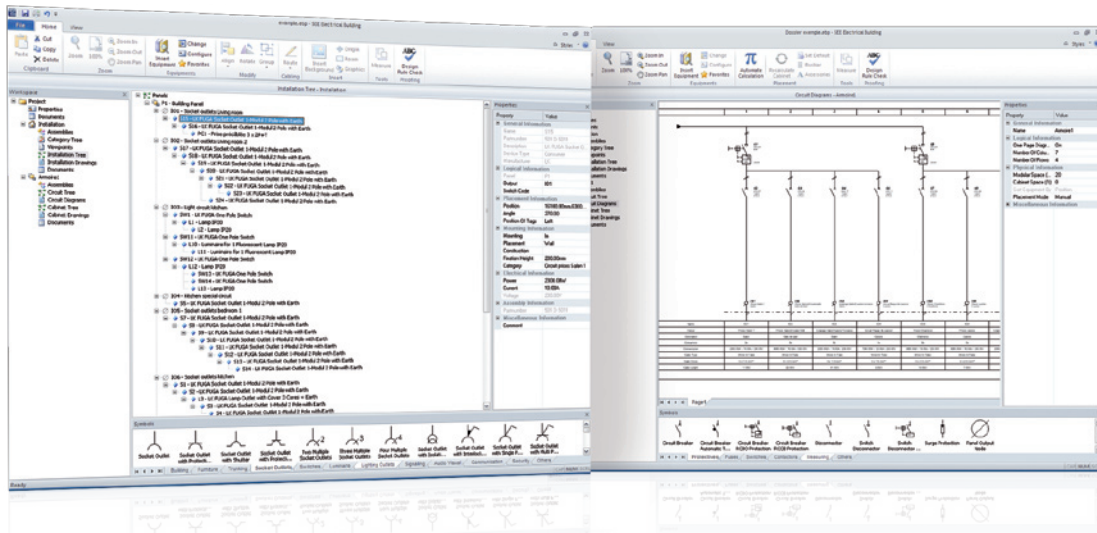
From the beginning, the user obtains a multi-manufacturer database which contains routinely used material. The databases are easy to update. Functionality of selection enables the user to quickly find the correct reference (i.e. selection by manufacturer, selection by number of pole, by intensity...)

An optimised interface !

Standardised symbols!

With its standardised symbols, intuitive interface and « professional » functionalities, **SEE Electrical Building** is THE software, dedicated to electrical installation, compulsory to answering the actual normative requirements.

User-friendly and ergonomic, all the **SEE Electrical Building** commands have been design specifically for the creation of electrical projects. Its intuitive interface enables every user, even occasional, to be immediately operational.



User-friendly Windows environment

The software works with the latest windows environment version, what ensures a better read meanwhile enabling rapid access to all the functions.

Modularity

SEE Electrical Building is composed of 3 independent modules designed to suit the users' needs:

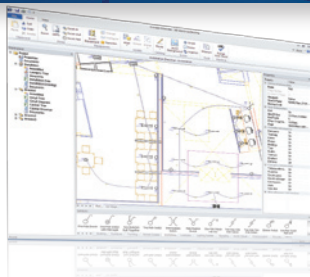
- «**Installation**» for the electrical implantation of construction
- «**Single-line schemes**» for the generation of single-line schemes,
- «**Layout**», for the implantation of electrical layouts.

DXF, DWG, DXB format compatible

SEE Electrical Building allows the user to re-size, to set layer visibility, and to import plans which are generated in AutoCADtm or other compatible software formats (DXF/DWG/DXB)

These modules can be used separately or within a « package ». In the case of being used as a package, any new circuit designed in the « Installation » module is automatically generated in the « Single-line schemes module. In each module, project management functionality allows you to work more efficiently (automatic numbering of the sheets, automatic generation of material lists from the schemes, exportation of the lists in Excel format,...).

« Installation » Module



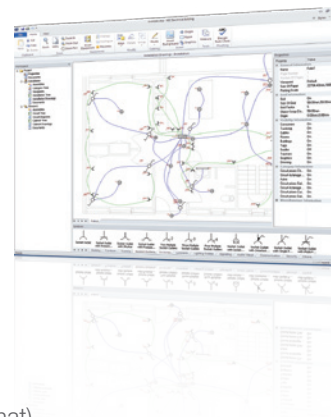
This efficient module enables the user to easily import plans of different formats DWG, DXF, ...

The implantation takes into account the different professional installation modes: visible, pipe installation, discharge spout installation, built-in installation, octopus (floor, ceiling)...

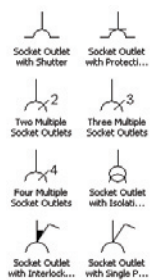
Wire lengths are calculated taking into account the material installation height and the installation mode.

With the help of the filters, the user can select only data necessary for the installation. A map is obtained which is easier to use and more readable. The filtering system also allows the selection the display data, i.e. the plug circuit.

Due to its simple functions, the user can project several level installations without being obliged to use a complex 3D design system.



Main functions :



- Importation of architect ground-plans (import in DWG, DXF, DXB format)
- Design of the building with predefined objects (walls, doors, ...)
- Selection of the display of the layers and re-cutting of the DWG, DXF, DXB files.
- Work to scale
- Scheme listings
- Installation of electrical material (electrical material database: slugs, switches,...) with the possibility of additions or modifications
- Positioning of wires
- Management of the wires and materials installation heights

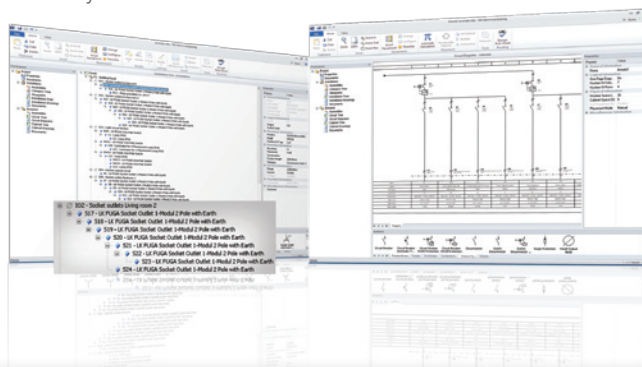
« Single-line schemes » module

Due to a hierarchical arborescence (explorer as Windows Explorer), the user builds intuitively the electrical circuits using a drag & drop system, and generates its schemes instantaneously. The legend filling is systematic and the lengths of the circuits are automatically deducted from the "Installation" module.

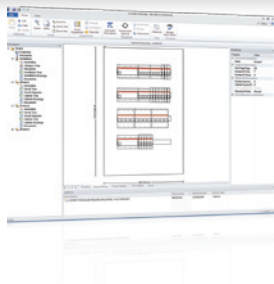
Nomenclatures are exportable in Excel or XML format.

Main functions :

- Automatic generation of single-line schemes
- Standard symbols library
- Automatic creation of the connections
- Automatic generation of the lists of material from the schemes
- Export of lists in Excel format



« Layout » module



In order to deliver a complete project to the final customer, the « Layout » module enables the user to create rapidly a realistic and dimensioned view of the electrical layout, and also to order the corresponding accessories.

Main functions :

- Automatic installation of the layouts from the circuit schemes
- Manual positioning of the material due to professional rules
- Calculation of free space
- Exportation of lists in Excel format
- Multiple view of the layout (rails positioning, connexion between the equipments, front side and doors).